

USG - CS09 - METAL LAY-IN SYSTEM (T15)

USG Middle East
Main Office:
7410 (Wasil), Street #23, Cross 76. 2nd Industrial City
Dammam 34425-4201, Kingdom of Saudi Arabia
+966 13 812 0095 www.usgme.com

Project Name
Title : Project Status
Owner
Architect
Status Study Execution Installation

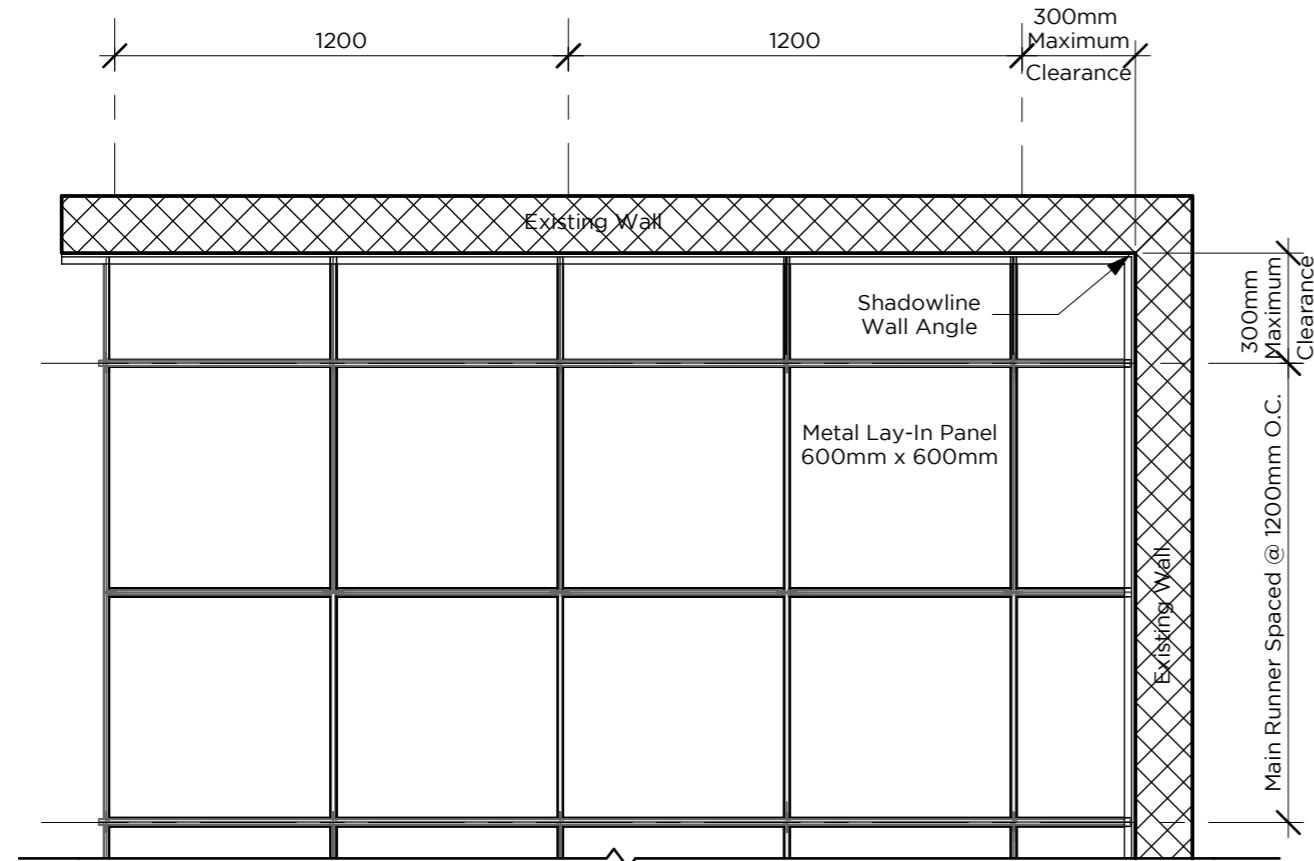
Examined and approved by the customer

Scale :
Reference-Drawing :

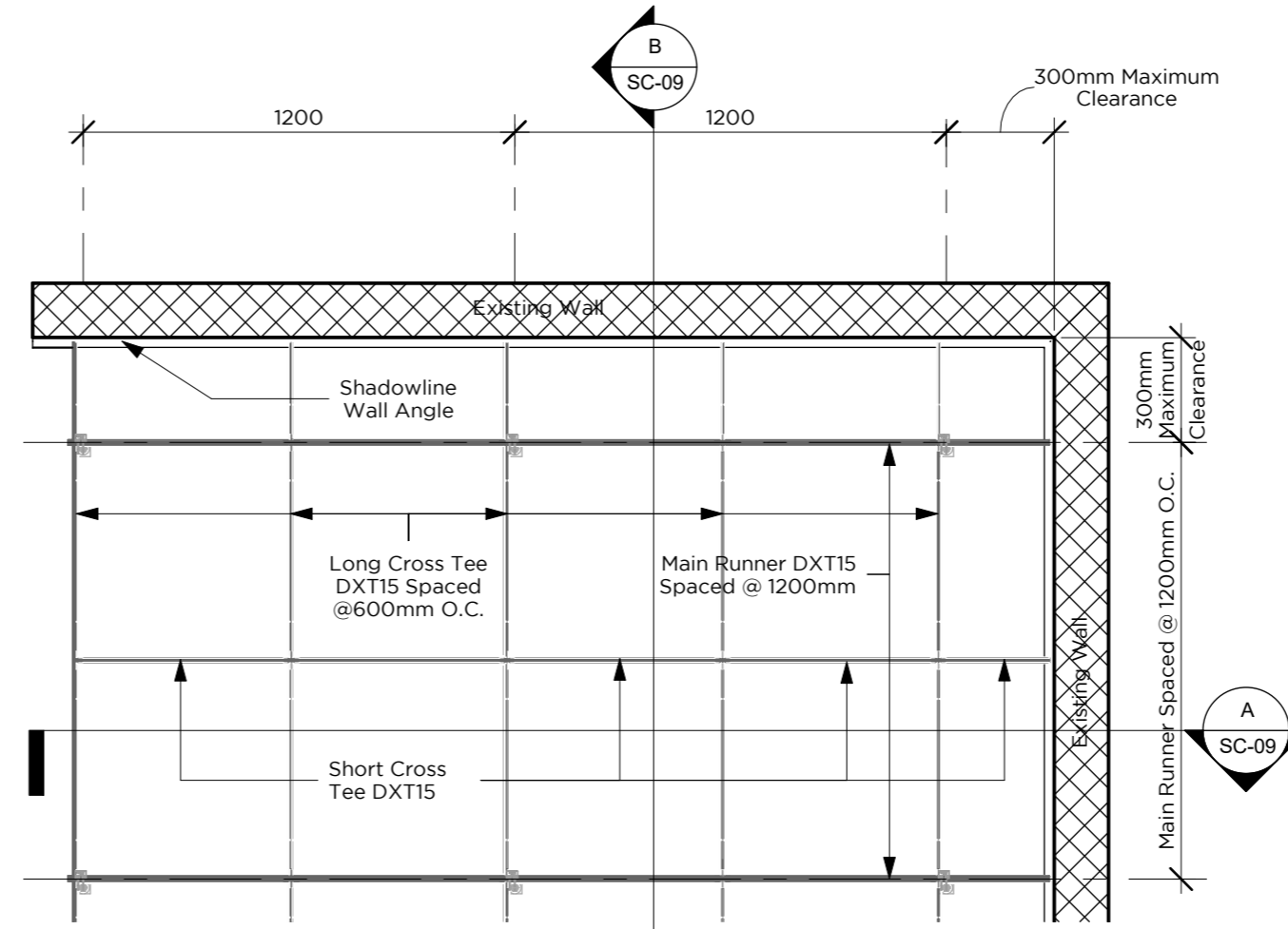
Created : /
Checked : /
Drawing : Revision:

Revised

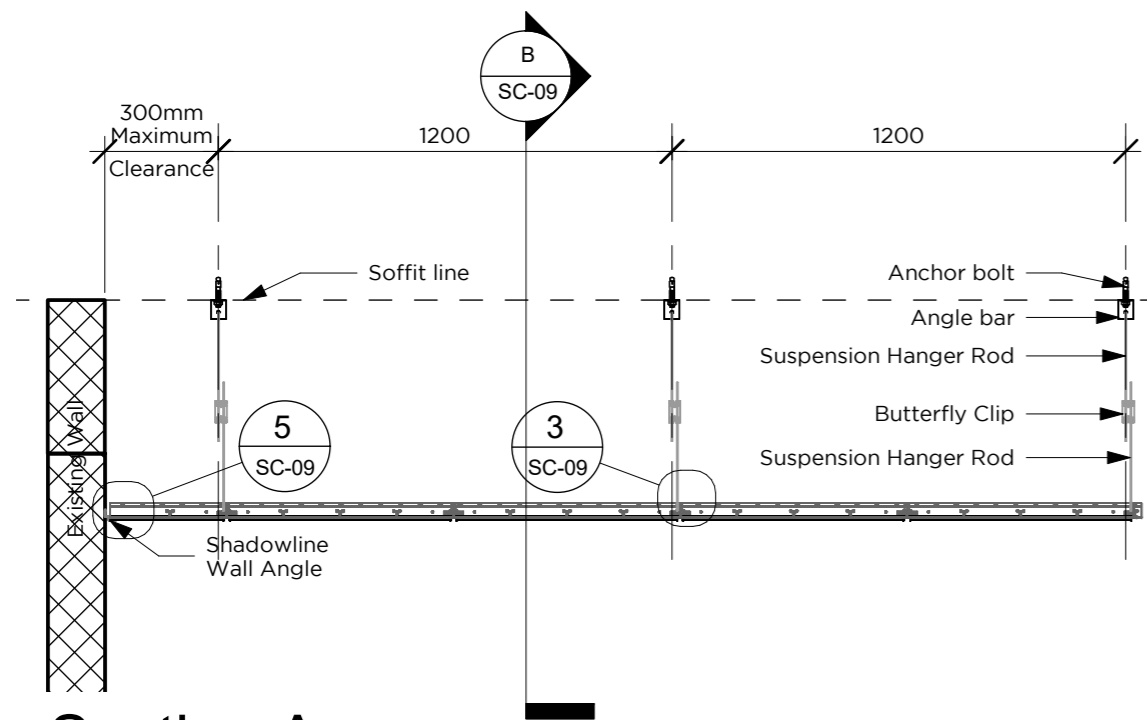
FACTORY OF USG MIDDLE EAST reserves all rights to the information disclosed in this drawing. Such information may not be copied nor forwarded in any other form to third parties without the express consent in writing of USG for the purpose of manufacture or purchase of the products or parts shown.



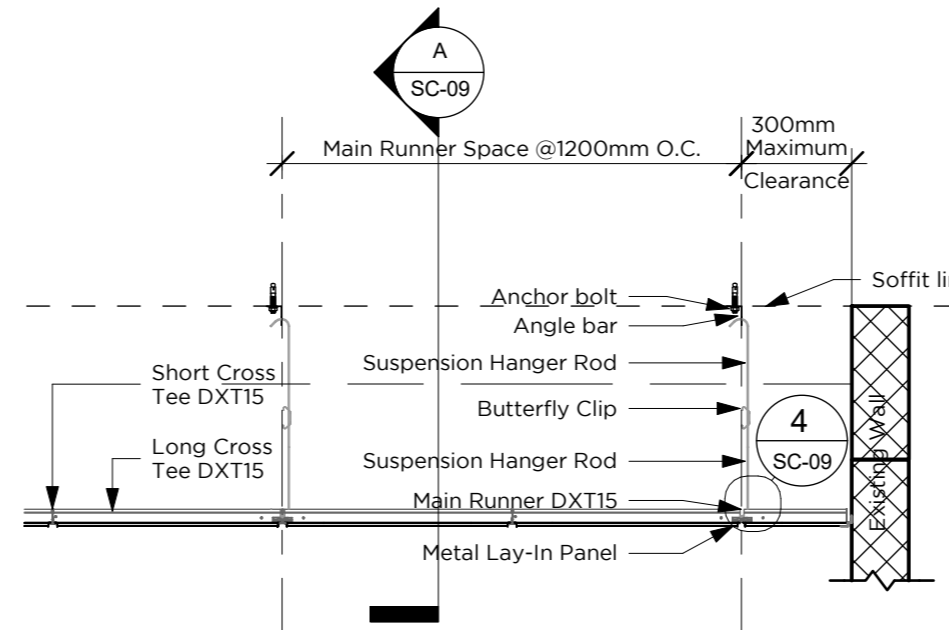
1 Reflected Ceiling Plan
1 : 20



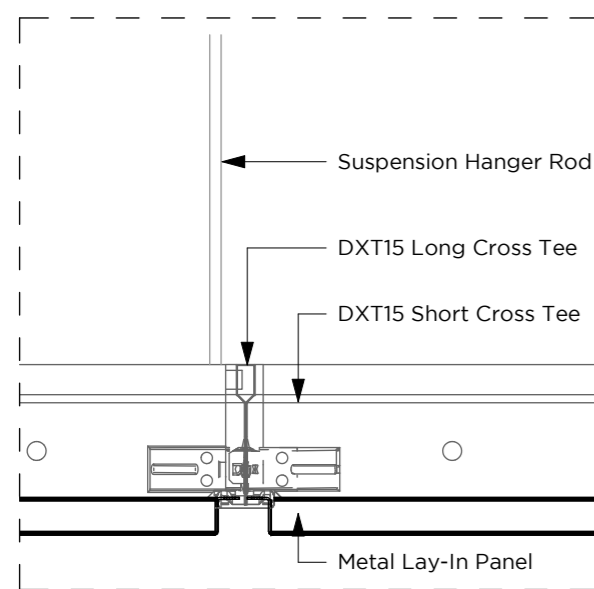
2 Cut Plan
1 : 20



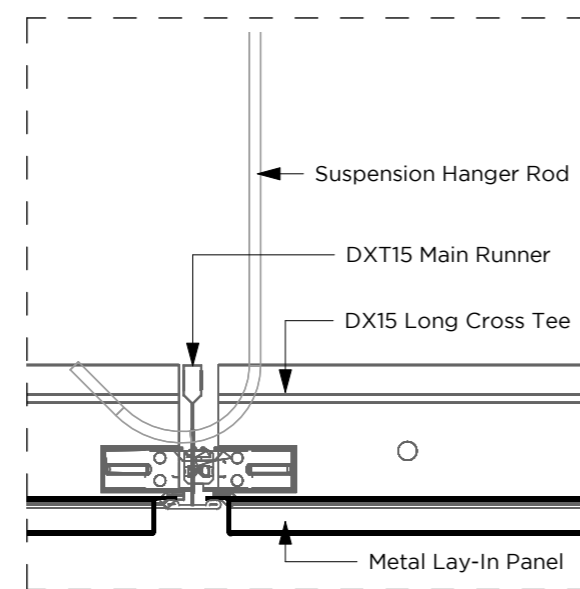
A Section A
1 : 20



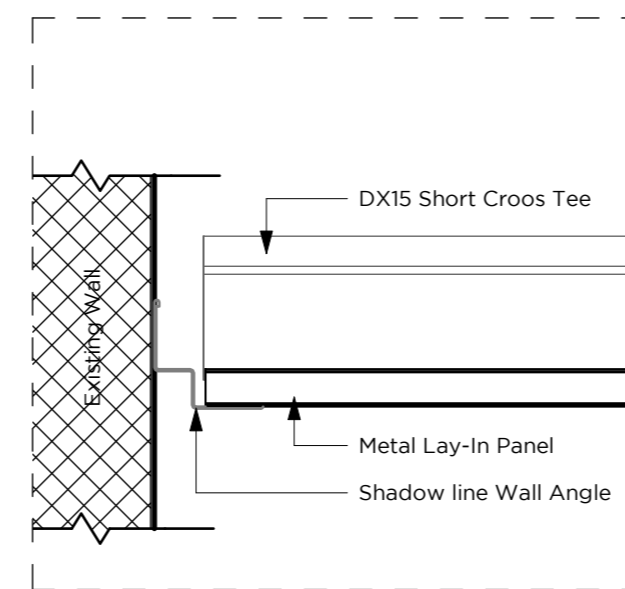
B Section B
1 : 20



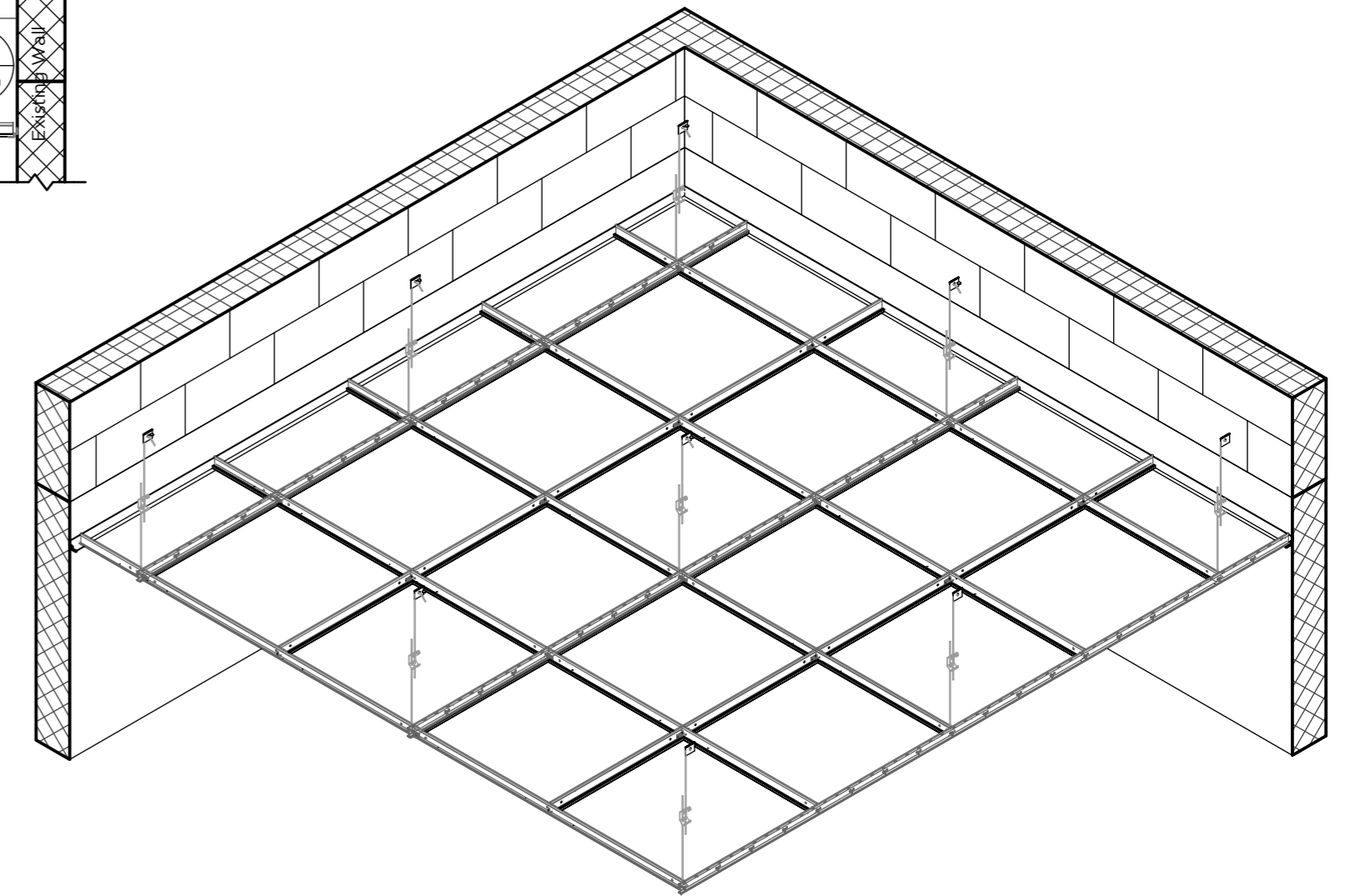
3 Callout A
1 : 2



4 Callout B
1 : 2



5 Callout C
1 : 2



6 Isometric View
1 : 20

SC-09

Scale :