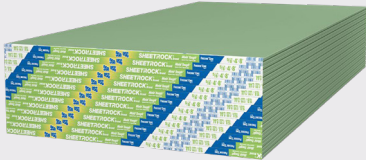


# SHEETROCK® BRAND GYPSUM BOARD MOLD TOUGH™ FIRECODE X



## FEATURES & BENEFITS

### 15.9 mm Type X wallboard with moisture and mold resistance

- 15.9 mm Type X moisture- and mold-resistant panels for use on walls and ceilings
- Feature a noncombustible, moisture- and mold-resistant gypsum core encased in moisture- and mold-resistant, 100% recycled green face and brown back papers
- Comply with ASTM C1396, Standard Specification for Gypsum Board, for 15.9 mm Type X, water resistant gypsum wallboard and exterior gypsum soffit board
- Underwriters Laboratories Inc. (UL) Classification as to fire resistance, surface burning characteristics and noncombustibility
- Achieved GREENGUARD Gold Certification and qualifies as a low VOC emitting material (meets CA 01350)

## DESCRIPTION

Sheetrock® Brand Gypsum Board Mold Tough™ Firecode X feature a noncombustible, moisture- and mold-resistant gypsum core that is encased in moisture- and mold-resistant, 100% recycled green face and brown back papers. When tested in accordance with ASTM D3273, Standard Test Method for Resistance to Growth of Mold on the Surface of Interior Coatings in an Environmental Chamber, the panels meet or exceed ASTM C1396 specifications. The long edges of the panels are tapered, allowing joints to be reinforced and concealed with USG Middle East Sheetrock® Brand All Purpose Joint Compound. The panels are UL Classified for fire resistance and can be used in any UL Design in which Type SCX panels are listed. On the face along the long edge of each panel, the UL Type Designation is printed for easy identification by building inspectors.

## INTENDED FOR

- Commercial or residential applications where moisture and mold resistance Gypsum board are required
- Interior tile substrate in dry locations or areas with limited water exposure
- Protected exterior soffit and ceiling applications

## LIMITATIONS

1. Avoid exposure to sustained temperatures exceeding 50 °C.
2. Avoid exposure to excessive, repetitive or continuous moisture before, during and after installation. Eliminate sources of moisture immediately.
3. Must be stored off the ground and under cover in accordance with Gypsum Association's Handling and Storage of Gypsum Panel Products (GA-801).
4. Not suitable for use as a substrate for tile in wet areas such as tubs and showers, gang showers and other areas subject to direct water exposure. USG ME recommends Securock™ Brand Glass Mat Sheathing for such applications.
5. Use as a tile substrate is limited to tile installed according to the most current TCNA and ANSI specifications. Please consult with the adhesive and tile manufacturers for their recommendations for maximum size and weight parameters for use with gypsum board.
6. Not recommended for exterior soffits and ceilings which project upwards and away from the building proper.
7. For protected exterior ceiling and soffit applications, the panels must be protected from direct exposure to weather.

## INTERIOR INSTALLATION

Sheetrock® Brand Gypsum Board Mold Tough™ Firecode X install and finish just like standard 15.9 mm

### Maximum Frame Spacing Drywall Construction

Direct Application	Panel Thickness	Location	Gypsum Board Orientation to Framing	Maximum Frame Spacing OC <sup>1</sup>
Single-layer	15.9 mm	Ceilings	Perpendicular	600 mm
		Sidewalls	Parallel or perpendicular	600 mm
Double-layer	15.9 mm	Ceilings	perpendicular	600 mm
		Sidewalls	Perpendicular	600 mm

**Notes:**

1. Consult USG Middle East technical team for the framing spacing if fire rating required and if water-based texturing material is to be applied.

## FINISHING AND DECORATING

For high-quality finishing results, USG recommends USG Sheetrock® Brand finishing products.

Painting products and systems should be used that comply with recommendations and requirements in Appendices of ASTM C840.

For priming and decorating with paint, texture or wall covering, follow manufacturer's directions for materials used. Gypsum Association's Recommended Specification for Levels of Gypsum Board Finish (GA-214) should be referred to in order to determine the level of finishing needed to ensure a surface properly prepared to accept the final decoration.

All surfaces, including applied joint compound, must be thoroughly dry, dust-free and not glossy. Prime with Sheetrock® Tuff-Hide™ primer-Surfacer or with an undiluted, interior latex flat paint with high-solids content. Allow to dry before decorating. To improve fastener concealment where gypsum panel walls and ceilings will be subjected to critical artificial or natural side lighting, or will be decorated with a gloss paint (eggshell, semi gloss or gloss), the gypsum panel should be skim coated with USG ME Sheetrock® Brand All Purpose Joint Compound. This equalizes suction and texture differences between the drywall face paper and the finished joint compound before painting. When a Level 5 finish is required, use USG Middle East Sheetrock® Brand Sheetrock® Brand Tuff-Hide™ Primer-Surfacer.

## PRODUCT DATA

	Sheetrock® Brand Gypsum Board Mold Tough™ Firecode X
Thickness	15.9 mm
Lengths <sup>1</sup>	2440 mm
Width	1220 mm
Weight <sup>2</sup> , nominal	11.6 kg/m <sup>2</sup>
Edges	Tapered
Packaging	Two panels per bundle

**Notes:**

1. Other sizes available by special order.
2. +/- 5%

### Moisture And Mold Resistance

Per ASTM C473, the average water absorption for Sheetrock® Brand Gypsum Board Mold Tough™ Firecode™ is not greater than 5% by weight after two-hour immersion.

In independent lab tests conducted on USG Sheetrock® Brand EcoSmart Panels Mold Tough® Firecode® X at the time of manufacture per ASTM D3273, Standard Test Method for Resistance to Growth of Mold on the Surface of Interior Coatings in an Environmental Chamber, the panels meet or exceed ASTM C1396 specifications.

This ASTM lab test may not accurately represent the mold performance of building materials in actual use. Given unsuitable project conditions during storage, installation or after completion, any building material can be overwhelmed by mold. To manage the growth of mold, the best and most cost-effective strategy is to protect building products from water exposure during storage and installation and after completion of the building. This can be accomplished by using good design and construction practices.

## COMPLIANCE

- Comply with ASTM C1396 for 12.7 mm and 15.9 mm Type X, water resistant gypsum wallboard and exterior gypsum soffit board
- Classified as a Class A Interior Finish Material per Section 803.1 of the International Building Code® (IBC®)
- UL Classification as to fire resistance, surface-burning characteristics and core combustibility
- Achieved GREENGUARD Gold Certification and qualifies as a low VOC emitting material (meets CA 01350)

**Notice:**

As we are involved in constant products development; this document information is subject to change without prior notice. Please always refer to [usgme.com](http://usgme.com) for the updated products information document.

©2020 Factory of USG Middle East LTD. Co. All rights reserved.

